

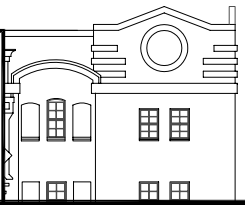
1 SUITE TYPE 'D' FLOOR PLAN
NTS 1509 sq.ft.

8" HIGH PARTITION
FULL HEIGHT PARTITION



Rumley Distinctive Lofts

The Developer reserves the right to make reasonable alterations to the plans and reasonable substitutions to the specifications included therein, provided that such alterations and substitutions comply with the National Building Code of Canada. All dimensions are approximate and will be confirmed by legal land survey.



KyparkRusick Architects

114 DUNDAS STREET EAST, SUITE 200
TORONTO, ONTARIO M5G 1L4
DATE PLOTTED: 2 October 2008